



Bar stool shown in white oak and 913 wool felt

DGD Backless Bar + Counter Stools

Counter Height:

14.5 SD x 16.5 W x 26 SH (Inches)

Bar Height:

14.5 SD x 16.5 W x 30 SH (Inches)

AVAILABLE MATERIALS:

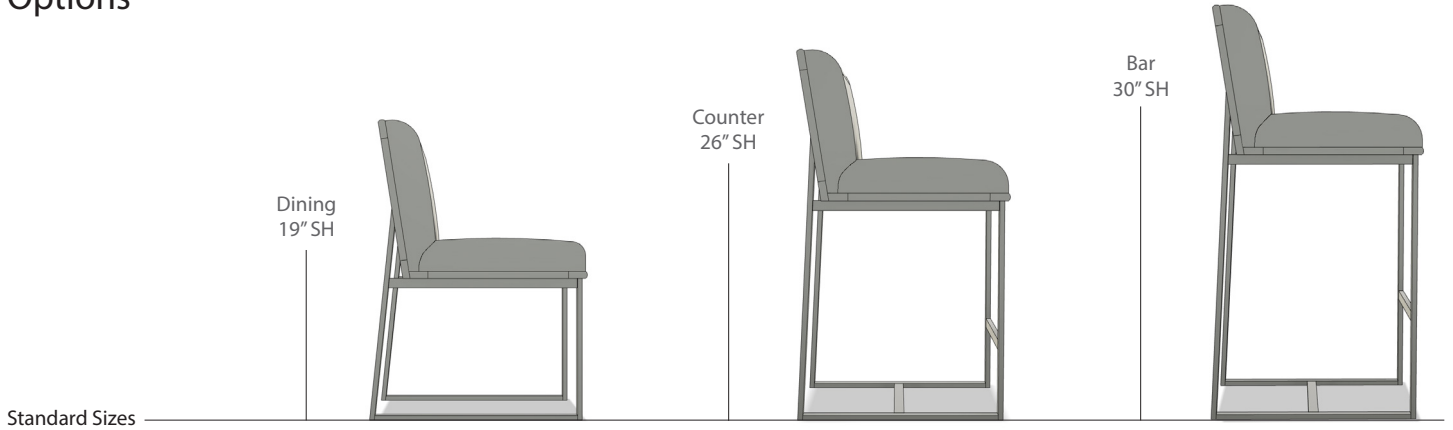
Wood

- ash
- maple
- walnut
- white oak
- ebonized ash
- white washed ash

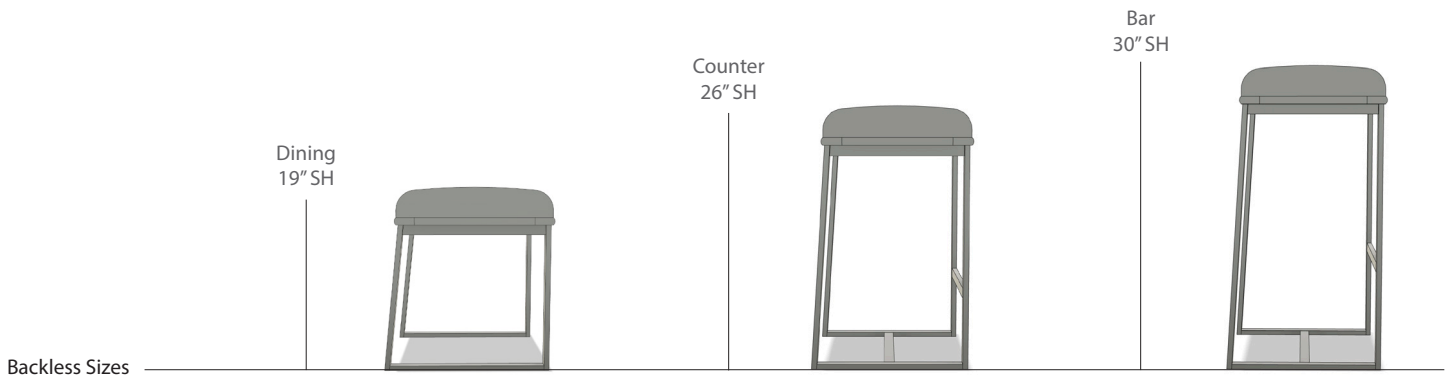
Metal Powder-coating in standard RAL colors

Upholstery COM/COL or in any of our studio selected fabrics and leathers
0.75 yards fabric or 14 sq ft leather required (depending on pattern and repeat)

Options



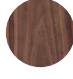



Custom seat height and ADA requirements available upon request

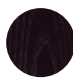



Wood

Standard

-  ash
-  maple
-  walnut
-  white oak

Special Edition

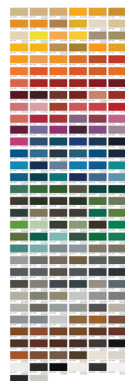
-  ebonized ash
-  white washed ash

Metal Powder Coating

Standard



RAL Colors



Material Requirements

	Fabric yards	Leather sq ft
Dining Chair	1.5	27
Counter Stool	1.25	22.5
Bar Stool	1.25	22.5
Dining Stool	0.75	14
Backless Counter Stool	0.75	14
Backless Bar Stool	0.75	14

Depending on pattern and repeat
Please confirm selection prior to purchase.

Inset chair back can be a different material, matching wood insert, or wallpaper panel.

Available in any of our studio selected fabrics and leathers