



Shown in white oak and 653 wool felt

## DGD Dining Chair

### DIMENSIONS:

22.5 D x 18 W x 32 H x 19 SH (Inches)

### AVAILABLE MATERIALS:

#### Wood

-  ash
-  maple
-  walnut
-  white oak
-  ebonized ash
-  white washed ash

#### Metal

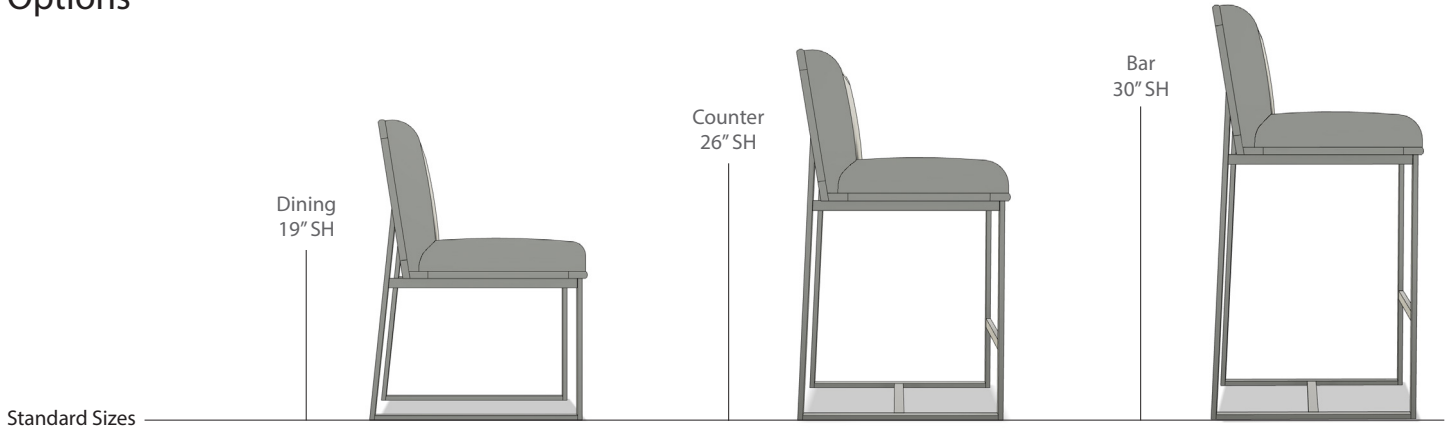
Powder-coating in standard RAL colors

#### Upholstery

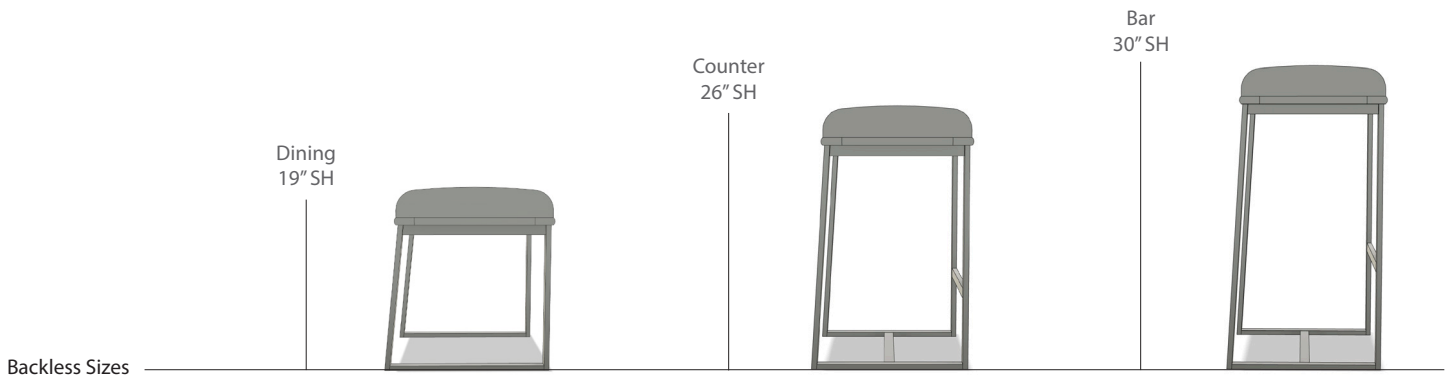
COM/COL or in any of our studio selected fabrics and leathers

1.5 yards fabric or 27 sq ft leather required (depending on pattern and repeat)

# Options







Custom seat height and ADA requirements available upon request

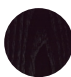



## Wood

### Standard

-  ash
-  maple
-  walnut
-  white oak

### Special Edition

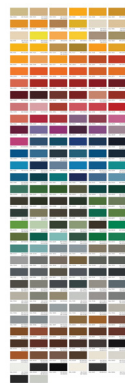
-  ebonized ash
-  white washed ash

## Metal Powder Coating

### Standard



### RAL Colors



## Material Requirements

	Fabric yards	Leather sq ft
Dining Chair	1.5	27
Counter Stool	1.25	22.5
Bar Stool	1.25	22.5
Dining Stool	0.75	14
Backless Counter Stool	0.75	14
Backless Bar Stool	0.75	14

Depending on pattern and repeat  
Please confirm selection prior to purchase.

Inset chair back can be a different material, matching wood insert, or wallpaper panel.

Available in any of our studio selected fabrics and leathers